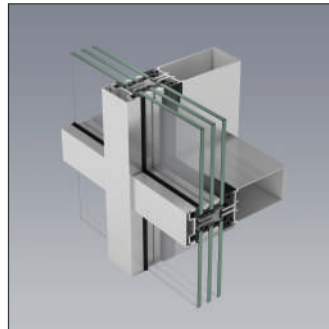
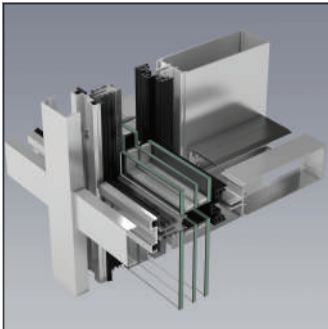


Technical Specification

50CW Curtain Wall System



Designed for all building types from ground floor to high rise projects, the 50CW is a high performance, cost-effective curtain wall system. It meets BS EN 13830 standards, ensuring exceptional resistance to wind, water, and air infiltration, and achieves thermal values as low as $U_f 0.88 \text{ W/m}^2\text{K}$.

The transom-to-transom design and universal glazing rebate gasket simplify stock management and installation. The gasket design allows any number of drainage levels for maximum design freedom while the flex injection assembly ensures precise and reliable sealing of all joints.

The 50CW is compatible with Kestrel window, door and ground floor treatments offering a visually consistent and practical solution for complete façade projects.

Features and benefits

- Slim 50mm sightlines
- Mullion drained and ventilated
- Transom/transom sharp edged profiles
- Exceptional weather and thermal performance
- Infills between 26mm and 56mm and infill weights up to 1000kg
- Single rebate gasket for both transom and mullion
- Overlap principle at mullion/transom joints
- Flex Injection Technology (Patent Pending)
- Flex transom seal moulding and injector



TECHNICAL SPECIFICATION

Application	Residential and commercial - new build and refurbishment.		
Maximum sizes	To be calculated in accordance with individual site conditions.		
U-Value	U _{gw} -to be calculated in accordance with individual site conditions U _f values as low as 0.88 W/m ² K inc. screw factor (56mm glass thickness)		
Jointing	Mechanical transom/mullion jointing.		
Glazing options	Insulated glass units or composite panels, 26mm to 56mm thick.		
Performance	Watertightness	Class REI 950	(EN 12154)
	Air permeability	Class AEI 950	(EN 12152)
	Wind resistance	+/- 2000 Pa nominal	+/-3000 Pa safety
	Impact resistance Mullion/transom	Class E5	(EN14019)
	Impact resistance Infill	Class I5	(EN14019)
	Sound Insulation	Rw up to 47 dB	(EN ISO 717-1)
Finishes	Mill finish.		
	Etched and anodised Silver AA25 or colours on request.		
	Polyester powder coat paint. See separate list for standard colour range available.		
Single or dual colour profiles	Option		
Design standards	BS EN 12020-2:2001 Aluminium and aluminium alloys, extruded precision profiles.		
	BS 3987:1991 Specification for anodic oxide coatings.		
	BS EN 12206-1:2021 Paints and varnishes, coating of aluminium and aluminium alloys.		
	BS EN 13830:2015+A1:2020 Curtain walling- product standard.		
	BS EN 13830 Test data. (CWCT pending)		



Kestrel Aluminium Systems Ltd., 180 Rupert Street, Aston, Birmingham, B7 5DT

Tel: **0121 333 3575** • Fax: **0121 333 5335** • Email: **info@kestrelaluminium.co.uk** • **www.kestrelaluminium.co.uk**



We operate a continuous development programme and we reserve the right to amend specification without prior notification. Please contact the technical department for further information.
All copyright, trademarks and registered design rights for the products detailed in this brochure are the property of Kestrel Aluminium Systems Ltd.

