

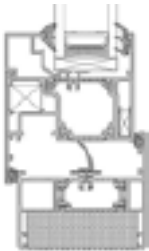


ALUWIN 58BD DOOR SYSTEM

The 58BD door system is the perfect choice for residential or commercial projects, offering a cost effective, high performance solution in a wide range of configurations and formats to suit your building design. The door system is available in Top Hung, Side Hung, Tilt before Turn, Fully Reversible and Steel Replacement formats with a range of glazing and hardware options. With clean lines and advanced functionality, this superior window and door system offers you the choice and flexibility to meet your needs.

Options

- Accommodates 24mm - 44mm glazing units for thermal and acoustic performance
- Double beaded option allow for internal glazing without the use of dummy vents
- Dedicated fixing straps for ease of installation
- Low threshold door option to comply with Part M – Building Regulation
- Full range of customisable hardware available
- Available in single or dual colour option, polyester powder coating and anodised finishes



Tilt Before Turn Detail

Door Configurations

- Single Doors (Open In)
- Single Doors (Open Out)
- Double Doors (Open In)
- Double Doors (Open Out)
- Lifetime Homes (LTH)



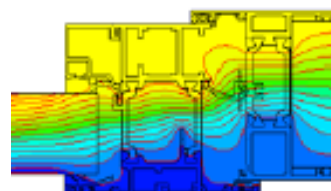
TSR Detail

Design Features

- Windows available in internally or externally glazed options
- Flat, chamfered or Ovolo details to achieve traditional or contemporary appearances
- 58mm or 70mm frame depth to accommodate varying types of applications
- Project in or project out options, where applicable
- Integrated deep head profiles for ease of trickle ventilation
- Unique polyamide thermal break design to improve thermal performance
- Certified under Secured by Design scheme
- Door system with unique Polyamide Euro groove design
- Sculptured detail that creates a picture frame view through the door
- Accepts a full range of restrictors and access control devices
- Available as a standard door option or with PAS 23 / PAS24 upgrade
- Multi-point locking mechanisms for enhanced security
- Cloaking feature conceals lock and prevents any access to locking points



Casement Detail



SPECIFICATIONS	OUTWARD OPENING	INWARD OPENING	FULLY REVERSIBLE	SINGLE & DOUBLE DOOR
Performance & Accreditation				
U-Value (Double Glazing)*	1.4 W/m ² K	1.6 W/m ² K	1.7 W/m ² K	1.7 W/m ² K
U-Value (Triple Glazing)**	1.2 W/m ² K	1.2 W/m ² K	--	1.4 W/m ² K
Window Energy Rating (WER)	B - C	B - C	npd	npd
Green Guide Rating	A+ - A Rated	A+ - A Rated	B Rated	npd
Acoustic Performance (dB)	Rw (C,Ctr) 42 (-1;-5) dB	Rw (C,Ctr) 42 (-1;-5) dB	npd	npd
Air Tightness (Pa)	Class 4	Class 3	Class 4	Class 4
Water Tightness (Pa)	Class 9a	Class 9a	Class 6a	Class 7a
Wind Load (Pa)	Class E2400	Class E2400	Class 5	Class E2400
Security	Kitemarked to PAS 24	Kitemarked to PAS 24	Kitemarked to PAS 24	Kitemarked to PAS 24
Secured By Design	Yes	Yes	Yes	Yes
Configurations				
Opening	Open Out	Open In	Open Out	Open In & Out
Top Hung	•	--	--	--
Side Hung	•	--	--	--
Bottom Hung	•	--	--	--
Fixed Light	•	•	•	•
Multilight	•	--	--	--
Tilt & Turn	--	•	--	--
Life Time Homes (LTH)	--	•	--	--
Tilt & Slide	--	•	--	--
Top Swing	--	--	•	--
Side Swing	--	--	•	--
Size Limits				
Max Vent Weight	--	--	--	90 Kg
Top Hung	90 Kg	--	--	--
Side Hung	55 Kg	--	--	--
Bottom Hung	60 Kg (3 Hinges)	100 Kg	--	--
Fixed Light	250 Kg	--	--	--
Tilt & Turn	--	100 Kg	--	--
Life Time Homes (LTH)	--	100 Kg	--	--
Tilt & Slide	--	100 Kg	--	--
Top Swing	--	--	60 Kg	--
Side Swing	--	--	50 Kg	--
System Features				
Frame Options	58mm & 70mm	58mm & 70mm	70mm	58mm & 70mm
Dual Colour Option	•	•	•	•
Multi-Point Locking	•	•	•	•
Glazing Options	Internal & External	Internal	Internal	Internal
Glazing Thickness	24mm - 44mm	24mm - 44mm	28mm	24mm - 44mm