

## ALUWIN GT55 THERMALLY BROKEN COMMERCIAL DOOR SYSTEM

The GT55 TB commercial door system provides the ultimate combination of security and performance. It also includes thermal break profiles for improved performance. It is ideal for a range of heavy duty commercial and public sector applications including offices, hospitals, schools, warehousing and other industrial applications.

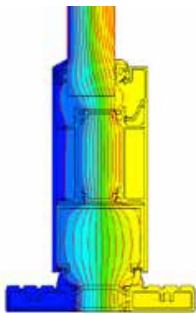
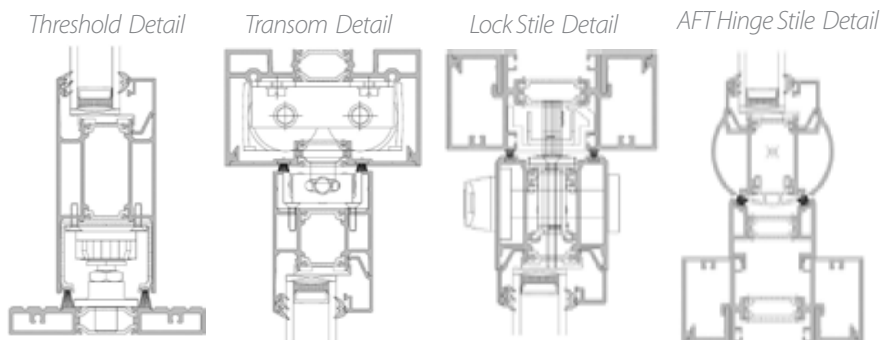
### Options

- Available with a full range of security and customisable hardware
- Electronic and manual access systems easily integrated
- Glazed or non-glazed options
- Available in single or dual colour option, polyester powder coating and anodised finishes
- Standard or DDA compliant overhead closer

### Door Configurations

- Single Doors (Open In)
- Single Doors (Open Out)
- Double Doors (Open In)
- Double Doors (Open Out)

GT55 TB is one of the most robust thermally broken commercial door systems available on the market. The system has been fully tested and can be integrated with our GT55 ground floor treatment system. This robust and low maintenance door provides complete flexibility in entrance solutions and is available in a wide range of colours and finishes to suit any project.



### Design Features

- Anti-finger trap styles
- Thermal break technology for enhanced thermal performance
- Unique security and safety features
- DDA compliant overhead closer options using Dorma RTS 87
- Structurally enhanced door framing
- Fully glazed, commercial swing door
- Incorporates high security mechanical dead lock
- Mechanical and electro-mechanical multi-point locking options
- Dual colour

SPECIFICATIONS		Single & Double Thermally Broken Door
<b>Performance &amp; Accreditation</b>		
U-Value (Double Glazing)*		1.4 W/m <sup>2</sup> K
U-Value (Triple Glazing)**		--
Green Guide Rating		C Rated
Acoustic Performance (dB)		npd
Air Tightness (Pa)		npd
Water Tightness (Pa)		npd
Wind Load (Pa)		npd
Security		npd
<b>Configurations</b>		
Opening		Open Out & Open In
Top Hung		--
Side Hung		--
Fixed Light		--
Fixed Light		--
Single Door		•
Double Door		•
Sliding Door		•
<b>Design Features</b>		
Max Vent Weight		80 Kg
Top Hung		--
Side Hung		--
Fixed Light		--
Tilt & Turn		--
<b>Size Limits</b>		
Frame Options		110mm
Dual Colour Option		•
Single Point Locking		•
Multi-Point Locking		•
Electro Mechanical Locking		•
Glazing Options		Internal
Glazing Thickness		24mm - 40mm