



**SLIM, MULTI-TRACK
ALUMINIUM LIFT & SLIDE**
WITH EXCEPTIONAL THERMAL
PERFORMANCE

Prestige
LIFT & SLIDE PATIO DOOR
PRODUCT CATALOGUE
/ 04.2023



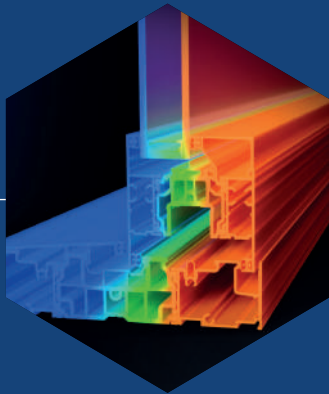
SHEERLINE®
ALUMINIUM WINDOWS AND DOORS

Introducing
the
Prestige
LIFT & SLIDE PATIO DOOR

Completing the Prestige door range and fulfilling the need for a high performance patio, the Prestige Lift & Slide enables you to offer a premium door that maximises views, perfectly complementing the existing Prestige Bi-fold and ideal for customers looking for a panoramic door.

With ultra-slim sightlines, with interlocks as slim as 52mm, our latest product introduction will help you unlock the potential that offering a perfectly matched, high performance aluminium range brings.

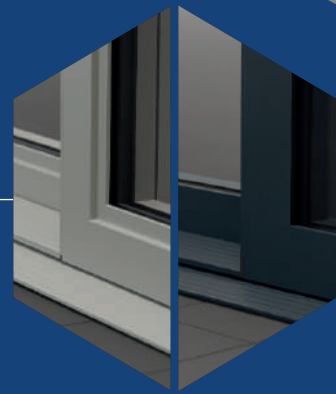
All delivered with
the **no-nonsense
Part L compliance
you'd expect** from
Sheerline.



Exceptional thermal
performance
using **Thermlock®
technology**



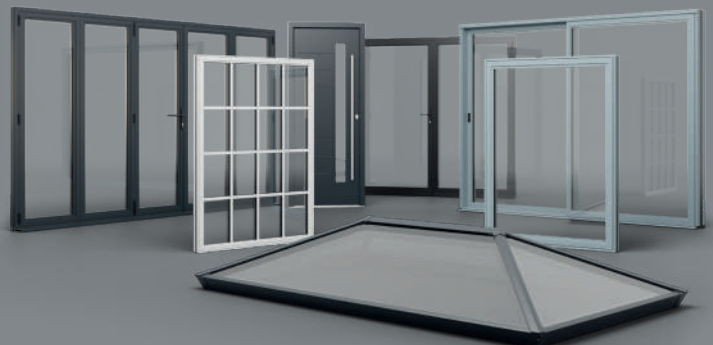
Based on our proven
Prestige range with
the same **clip-in bead
system**

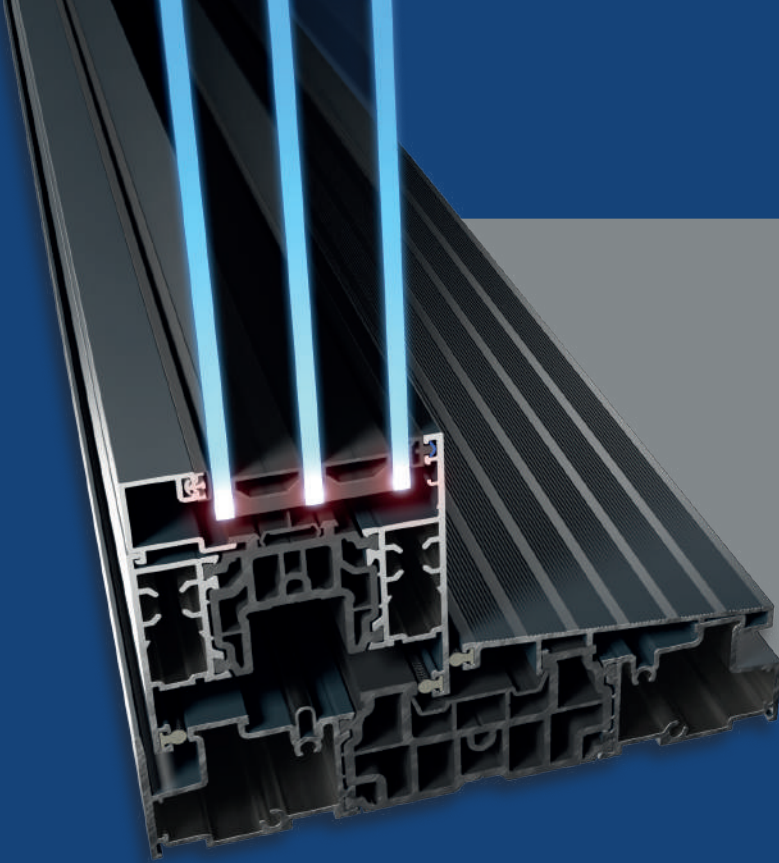


Available in **stepped
and contemporary
styles**

**SUITES IN PERFECTLY WITH THE
REST OF THE SHEERLINE RANGE**

Available in the same style options as the rest of our high-performance aluminium range, the Prestige Patio Door integrates seamlessly to provide the perfect whole house solution, all perfectly matched.





1.0
W/(m²K)

TRIPLE GLAZED
U-VALUE



1.4
W/(m²K)

DOUBLE GLAZED
U-VALUE

PART L

Compliant



Using Sheerline's unique Thermlock® technology, our Lift & Slide Patio offers industry-leading thermal performance. Fully Part L compliant, it achieves a U-value of 1.4 with standard double glazing, and a triple-glazed U-value² of 1.0 W/m²K to meet more stringent project requirements.

DOUBLE
GLAZING



1.4 U-value

TRIPLE
GLAZING



1.0 U-value

¹ U-values calculated to BS EN 14351-1:2016, meeting the requirements of Approved Document L 2021. For newbuild – refer to individual project SAP assessment for actual requirements



SLIM & STYLISH

Slim minimalist looks which aesthetically match the rest of the Sheerline range, maximise glass area to make the most of the expansive views homeowners value.

Super slim sightlines of 106mm frame & sash.




| | |
|----------------------------|----------------------------------|
| 80mm AS STANDARD | 52mm ULTRA SLIM OPTION |
| INTERLOCK | |



PRODUCT SPECIFICATION

Designed to cover the widest range of requirements possible, from modest replacement projects to vast new build and extension requirements, the Prestige Lift & Slide patio is designed to operate flawlessly at any size.



| | | | |
|---|--|--|---|
|  MAX SASH WEIGHT 400kg using proven easy-glide hardware (250kg standard) |  MAX WIDTH 6.5m unjointed |  MAX HEIGHT 2.5m |  COMPLIANT VIA SEPARATE 25mm head vent which doubles as a frame extension |
|---|--|--|---|



Frame can be delivered flat pack for restricted site access if required

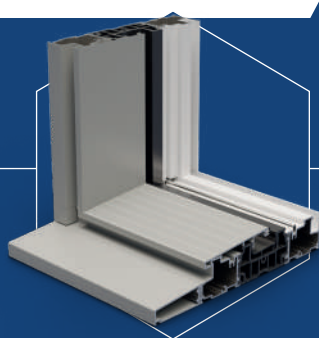


THRESHOLD OPTIONS

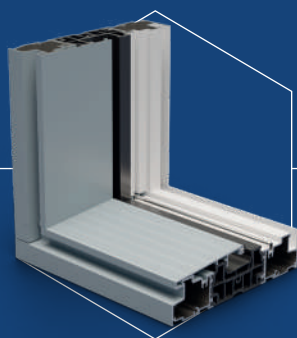
Concealed zero threshold available for seamless transition.

Available in

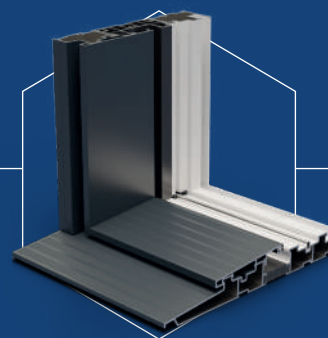
DOUBLE & TRIPLE
track



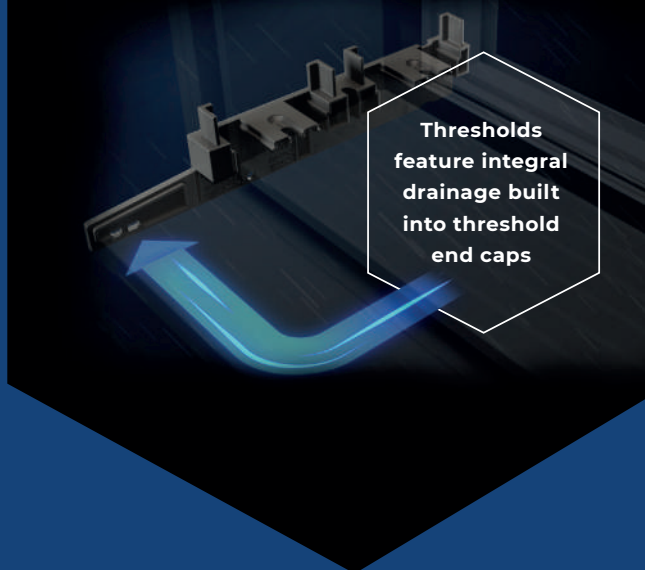
Standard Outer Frame
with Clip-on Sill Nose



Standard Outer Frame
(38mm high)



Low Threshold with Ramp
(25mm high) tested to the
requirements of Part M.
Only available in double track

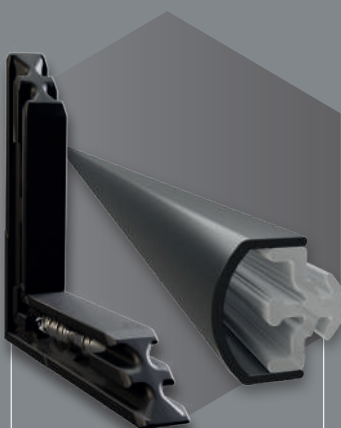


Thresholds
feature integral
drainage built
into threshold
end caps



EASY TO FABRICATE

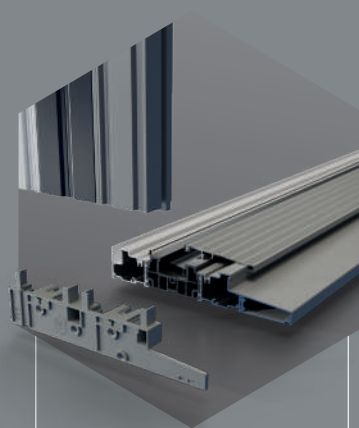
Based around many standard Prestige components, stockholding requirements are reduced while using our normal patented method of construction ensures production staff will find fabrication familiar, helping speed up manufacture.



Features standard
Prestige cleats,
chevrons, gaskets
and georgian bars for
reduced stock holding



**Patented adjustable
corner cleating**
method featured on
sash



**Frame to be square
cut** for assembly
with end cap frame
joint



HARDWARE & SECURITY

Like the rest of our products the Prestige Lift & Slide Patio has been designed to offer high levels of security, **with PAS24 accreditation as standard.**

- For a neater look and less snagging, a **unique retracting hook-lock with flush-fitting** keeps eliminate protruding locking pegs on jambs.
- High security interlocks bind sashes together to **stop unwanted intruders**. Rated to 4.5KN.

LIFT ASSIST AND DROP ASSIST AVAILABLE

An optional **Drop Assist**¹ helps dampen the handle's rotational speed, preventing it arcing too quickly when the sliding door is lowered onto the track.

While the **Lift Assist**² lends a helping hand when raising the sliding door off the track.

Both can be fitted if required and are recommended for extra-large door sashes over

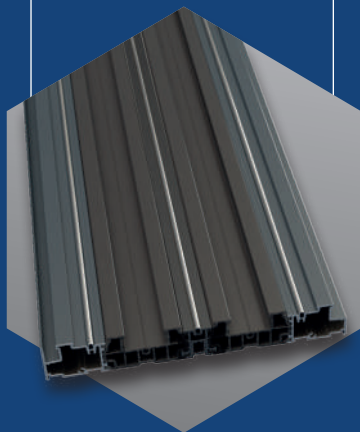
¹200KG / ²300KG.



SUPER SMOOTH OPERATION

Running on stainless steel tracks and using proven high-performance running gear ensures doors glide smoothly during operation.

Available in dual and triple track
options to cover most requirements



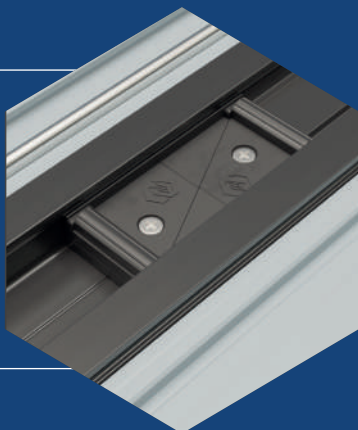
Utilises bespoke Lift & Slide gearing
based on a proven platform to ensure super smooth and reliable operation



Concealed buffers in the head
help dampen the opening and closing force of the sash



Patented sealing arrangement
helps ensure doors remain weathertight



Flush jambs
prevent snagging and helps keep visual lines clean



THE BENEFITS OF THE SHEERLINE RANGE

THE INTEGRATED SYSTEM THAT BUILDS IN PERFORMANCE

All our systems share common components and are designed with consistent aesthetics and features, meaning you can confidently specify from across our range of products.

Not just another aluminium system, Sheerline solves many of the issues experienced by aluminium installers meaning you will be able to install more windows and doors and spend less time on fixing remedial issues, helping boost productivity.



DESIGNED, MADE AND DELIVERED BY SHEERLINE

Manufactured in the UK, Sheerline designs and makes every major aluminium and moulded component to deliver top quality products on agile lead times. Fully traceable, Sheerline even powder coats all their own profiles to ensure the very best finish possible.



PATENTED CORNER JOINTING

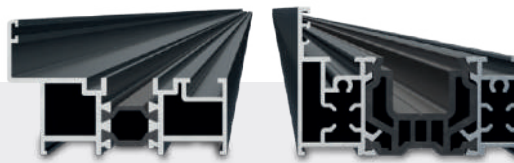
Our patented[†] corner jointing method does away with the need for crimping and specialised machinery, drastically reducing waste and allowing for easy replacement of damaged sections of profile if required. Larger frames can also be assembled in situ if required.

Insulated with
THERMLOCK[®]
technology

PERFORMANCE BUILT IN AS STANDARD

**Manufactured
in-house**, we've
designed and created
our own unique
Thermlock[®] multi-
chambered,
thermal breaks

Hidden away inside every Sheerline Prestige Lift & Slide Patio, these unique insulating chambers create products with class leading thermal performance, far superior to polyamide thermal breaks.



Polyamide



0.30 W/mK

THERMLOCK[®]



0.17 W/mK



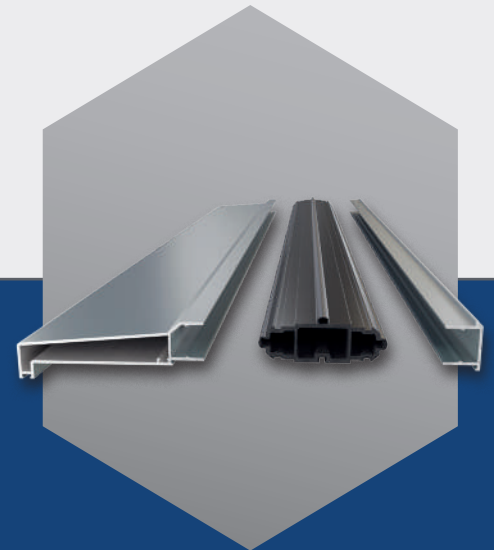
CLASS LEADING SERVICE AND SHORT LEAD TIMES

12 Standard Colours in Just 10 Days.
One of our key 'non product' differentiators is the agility of our service and our short lead-times. As we assemble final product close to dispatch we can even offer dual coloured profile on the same 10 day turnaround – in comparison to six week + for many competitors.



DESIGNED WITH THE INSTALLER IN MIND

We've built in lots of clever features, like the fact that Sheerline cills finish flush with our outer frames, meaning doors fit perfectly vertically to plaster lines. Improving the quality of your installations.



SUPERIOR WEATHER PERFORMANCE

Co-extruded weather-seals on cills and other ancillaries means there's minimal need for silicone sealing, saving time, money and creating more consistent, reliable and weatherproof installations.

Sheerline *Prestige* products are available in the following colours

OUR TRADITIONAL COLOURS

All available in dual colour combinations.



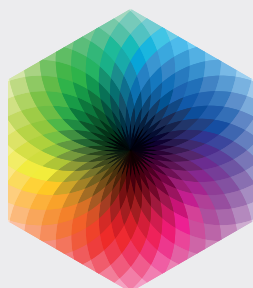
THE CHARACTER RANGE OF PREMIUM COLOURS

All available in dual colour combinations.



BESPOKE COLOURS

Please contact us for your requirements.
Available in Matt, Satin, Gloss or Textured finishes.



THE PARAGON METALLIC EFFECT RANGE

All available in dual colour combinations.



DISCLAIMER Due to the variability of manufacturing processes and the differences in the methods used to represent these colours, we cannot guarantee an exact colour match between the actual paint colour and the colour as seen on-screen or when printed. The RAL colour references are also provided as a guide only and we recommend asking to see a physical sample prior to order if required. All colours and finishes are supplied within standard tolerance ranges.

Technical information, specifications, literature and other materials are provided for illustration only, and may show and refer to product options. The accuracy of such information is not guaranteed and is subject to change without notification. The evaluation and selection of products and determining whether products are suitable for their intended use should be discussed between the end user and the installer/fabricator, as this falls outside our remit as system component manufacturer.

Information correct at time of publication. Sheerline reserve the rights to alter product specifications without prior notice. E&OE.

MAIN PROFILES

| ITEM | CODE | DESCRIPTION | FINISH OPTIONS | PACK QTY |
|---|---------------|--|---|----------|
|  | SLS100 | Patio 2 Pane Standard Frame | Traditional Colours - stocked Character Colours - stocked Metallic Effect Colours - stocked Bespoke - to order | 1x6.5m |
|  | SLS101 | Patio 3 Pane Frame Segment | Traditional Colours - stocked Character Colours - stocked Metallic Effect Colours - stocked Bespoke - to order | 1x6.5m |
|  | SLS102 | Patio 3 Pane Frame Segment (with Plaster Leg) | Traditional Colours - stocked Character Colours - stocked Metallic Effect Colours - stocked Bespoke - to order | 1x6.5m |
|  | SLS103 | Patio Jamb Extension | Traditional Colours - stocked Character Colours - stocked Metallic Effect Colours - stocked Bespoke - to order | 1x6m |
|  | SLS150 | Small Stepped Outer Frame | Traditional Colours - stocked Character Colours - stocked Metallic Effect Colours - stocked Bespoke - to order | 1x6m |
|  | SP100 | Small Outer Frame | Traditional Colours - stocked Character Colours - stocked Metallic Effect Colours - stocked Bespoke - to order | 1x6m |
|  | SLS250 | Patio 4 Pane Adaptor | Traditional Colours - stocked Character Colours - stocked Metallic Effect Colours - stocked Bespoke - to order | 1x6m |
|  | SLS300 | Patio Stepped Sash | Traditional Colours - stocked Character Colours - stocked Metallic Effect Colours - stocked Bespoke - to order | 1x6m |
|  | SLS301 | Patio Contemporary Sash | Traditional Colours - stocked Character Colours - stocked Metallic Effect Colours - stocked Bespoke - to order | 1x6m |
|  | SLS700 | Patio Low Threshold with Ramp | Silver Anodised | 1x6.5m |







ALUMINIUM ACCESSORIES

| ITEM | CODE | DESCRIPTION | FINISH OPTIONS | PACK QTY |
|---|---------------|--------------------------------|---|----------|
|  | SLS010 | Patio Jamb Trim | Traditional Colours - stocked Character Colours - stocked Metallic Effect Colours - stocked Bespoke - to order | 1x6m |
|  | SLS011 | Patio 3 Pane Frame Upper Clamp | Black Only | 1x6.5m |
|  | SLS012 | Patio 3 Pane Frame Lower Clamp | Mill Finish | 1x6.5m |
|  | SLS015 | Patio 25mm Frame Extension | Traditional Colours - stocked Character Colours - stocked Metallic Effect Colours - stocked Bespoke - to order | 1x6.5m |
|  | SLS016 | Patio Head Guide | Traditional Colours - stocked Character Colours - stocked Metallic Effect Colours - stocked Bespoke - to order | 1x6.5m |
|  | SLS050 | Patio Slim Interlock | Black Only | 1x6m |
|  | SLS051 | Patio Standard Interlock | Black Only | 1x6m |
|  | SLS052 | Patio Stepped Sash Infil | Traditional Colours - stocked Character Colours - stocked Metallic Effect Colours - stocked Bespoke - to order | 1x6m |
|  | SLS055 | Patio Slim Interlock Trim | Traditional Colours - stocked Character Colours - stocked Metallic Effect Colours - stocked Bespoke - to order | 1x6m |

ALUMINIUM ACCESSORIES

| ITEM | CODE | DESCRIPTION | FINISH OPTIONS | PACK QTY |
|---|---------------|--------------------------------------|---|----------|
|  | SLS056 | Patio Standard Interlock Trim | Traditional Colours - stocked Character Colours - stocked Metallic Effect Colours - stocked Bespoke - to order | 1x6m |
|  | SLS070 | Patio Threshold Trim | All Traditional Colours and Silver Metallic Effect | 1x6m |
|  | SLS073 | Patio Zero Threshold Track Extension | Black Only | 1x6.5m |
|  | SA077 | Patio Square Head Drip | Traditional Colours - stocked Character Colours - stocked Metallic Effect Colours - stocked Bespoke - to order | 1x6.5m |
|  | SA571 | Patio Cill Nose | Traditional Colours - stocked Character Colours - stocked Metallic Effect Colours - stocked Bespoke - to order | 1x6.5m |
|  | SA572 | Patio Cill Nose Base | Mill Finish | 1x6.5m |


GASKETS

| ITEM | CODE | DESCRIPTION | PACK QTY |
|--|--------------|-------------------------|----------|
|  | SG812 | Weatherseal Gasket | 200m |
|  | SG813 | Tall Weatherseal Gasket | 200m |
|  | SG821 | Wedge Gasket | 200m |
|  | SG822 | Slim Bubble Gasket | 200m |
|  | SG850 | Trim Seal (Textured) | 500m |
|  | SG851 | Sash Seal (Smooth) | 500m |

GASKET BEADS

| ITEM | CODE | DESCRIPTION | FINISH OPTIONS | PACK QTY |
|---|--------------|--|---|----------|
|  | SP400 | 28mm Clip-in Bead (For SBF301 only) | Traditional Colours - stocked Character Colours - stocked Metallic Effect Colours - stocked Bespoke - to order | 1x6m |
|  | SP402 | 36mm Clip-in Bead (28mm for SBF300) | Traditional Colours - stocked Character Colours - stocked Metallic Effect Colours - stocked Bespoke - to order | 1x6m |
|  | SP404 | 44mm Shuffle Bead | Traditional Colours - stocked Character Colours - stocked Metallic Effect Colours - stocked Bespoke - to order | 1x6m |

TRACK

| ITEM | CODE | DESCRIPTION | FINISH OPTIONS | PACK QTY |
|---|---------------|-------------|----------------|----------|
|  | SLS600 | Patio Track | - | 20x6.4m |

ACCESSORY UPVC

| ITEM | CODE | DESCRIPTION | FINISH OPTIONS | PACK QTY |
|---|---------------|-------------------------------|--------------------|----------|
|  | SLS510 | Patio Drainage Cover | Black Only | 10x3m |
|  | SLS530 | Patio Glazing Thermal Barrier | Black/Black Gasket | 10x3m |
|  | SLS550 | Patio Interlock Trim | Black Only | 20x2.5m |

THERMAL BARRIERS

| ITEM | CODE | DESCRIPTION | FINISH OPTIONS | PACK QTY |
|---|---------------|---|----------------|----------|
|  | SH135 | Patio Standard Interlock Thermal Barrier | - | 10x2m |
|  | SH136 | Patio Slim Interlock Thermal Barrier | - | 30m Coil |
|  | SH137 | Patio Sash Rebate Thermal Barrier (for use only with SLS700 installations) | - | 10m Coil |
|  | SBF804 | Button Trim | - | 20x6m |
|  | SBF502 | Capping Trim | - | 20x6m |
|  | SA505 | 80mm Accessory Thermal Break | Thermlock® | 4x6m |








MOULDINGS

| ITEM | CODE | DESCRIPTION | MATERIAL | PACK QTY |
|---|---------------|---------------------------------------|---------------------------------------|-----------|
|  | SLS500 | Patio Frame End Cap | Pure White, Hipca White, Black & Grey | 10 Pairs |
|  | SLS501 | Patio Fixed Sash Locator | Black Only | 10 |
|  | SLS502 | Patio Fixed Sash Corner Dam | Black Only | 10 |
|  | SLS503 | Patio Low Threshold End Cap | Black Only | 10 Pairs |
|  | SLS504 | Patio Bottom Interlock Dam and Packer | Black Only | 10 |
|  | SLS505 | Patio Top Interlock Dam | Black Only | 10 |
|  | SLS506 | Patio Jamb Trim Corner Shroud | Pure White, Hipca White, Black & Grey | 100 Pairs |
|  | SLS507 | Centre Sash Dam, LH Pair | Black Only | 1 Pair |
|  | SLS508 | Centre Sash Dam, RH Pair | Black Only | 1 Pair |
|  | SM113 | Corner Cleat Assembly | - | 100 |


MOULDINGS CONTINUED

| ITEM | CODE | DESCRIPTION | MATERIAL | PACK QTY |
|---|--------------|---------------------------------------|----------|----------|
|  | SM123 | Glazing Platform | - | 1000 |
|  | SM125 | Glazing Platform (For SBF301 only) | - | 1000 |
|  | SH026 | Georgian Bar tape | - | 33m Roll |
|  | SH103 | 90° Corner chevron | - | 400 |
|  | SH113 | Door Sash External Chevron | - | 200 |
|  | SH129 | Cleat Repair Screw | - | 100 |
|  | SH130 | Prestige Dual Drive Gearbox | - | Each |
|  | SH131 | Prestige Gearbox Mount | - | Each |
|  | SH950 | Prestige Corner Drill Jig | - | Each |

HARDWARE

| ITEM | CODE | DESCRIPTION | MATERIAL | PACK QTY |
|---|---------------|------------------------------------|---------------------------------------|----------|
|  | SLS610 | Patio Sliding Sash LH Hardware Kit | Pure White, Hipca White, Black & Grey | 1 Kit |
|  | SLS611 | Patio Sliding Sash RH Hardware Kit | Pure White, Hipca White, Black & Grey | 1 Kit |
|  | SLS618 | Patio Bump Support Washer | - | 10 |
|  | SLS619 | Roller Fixing Kit | - | 100 |
|  | SLS620 | Secondary Handle Fixing | - | 10 |
|  | SLS622 | Lock Fixing Kit | - | 100 |
|  | SLS621 | Security Plate | - | 100 |

ADDITIONAL ITEMS

| CODE | DESCRIPTION | PACK QTY |
|--------------|--|-----------|
| CP001 |  Foam Frame Protector | Each |
| PT015 | 15mm Sheerline Protective Tape | 250m Roll |
| PT030 | 30mm Sheerline Protective Tape | 500m Roll |
| PT040 | 40mm Sheerline Protective Tape | 500m Roll |
| PT060 | 60mm Sheerline Protective Tape | 500m Roll |
| PT080 | 80mm Sheerline Protective Tape | 500m Roll |
| PT120 | 120mm Sheerline Protective Tape | 500m Roll |
| ST001 | 24mm Sheerline Packaging Tape | 66m Roll |
| ST002 | 48mm Sheerline Packaging Tape | 66m Roll |



Manufactured and designed in the UK, innovative aluminium windows and doors with a unique approach to integrated systems design.

www.sheerline.com

☎ 01332 978000 | ✉ info@sheerline.com

