



# INNOVATION

## Streamlined

**NEW**

**Index by Sheerline**

The best of British alternative  
to cheap imported systems

**INDEX**   
BI-FOLD



# SHARPEN YOUR COMPETITIVE EDGE

With  
**INDEX**  
BI-FOLD 

Designed as the perfect high volume retail and contract system, Index combines **Sheerline innovation** with a **streamlined product offering** to maximise efficiency. The best of British alternative to cheap imported systems - all backed up by Sheerline's market leading service and support.



**5 DAY LEAD-TIMES**  
In stillage quantities for  
production efficiency



**100% SHEERLINE**  
Same quality, service  
and innovation



**FULLY COMPATIBLE**  
Multiple hardware  
options available

**PART L** Compliant 

## NO FUSS, NO FOAM, FULLY COMPLIANT

Index bi-folds are Part L compliant, able to achieve a double-glazed U-value of 1.4 W/m<sup>2</sup>K which easily achieves compliance for new homes and non-dwelling commercial projects.

DOUBLE GLAZING

1.4 U-value

44MM TRIPLE GLAZING

1.0 U-value



# TECHNICAL INFORMATION

**VBH**

A single roller eliminates the need for a dummy or floating mullion, creating slimmer more balanced sightlines

**Double wheeled design differentiates the product from lower-quality alternatives**

Index uses standard Sheerline patented corner cleats to lock in quality and strength

Index uses standard, installer friendly pre-gasketed, clip-in beads

**FULLY COMPATIBLE  
WITH ALL SHEERLINE'S  
STANDARD  
ANCILLARIES**

**HIGH QUALITY  
TRI-MATERIAL  
GASKETS**

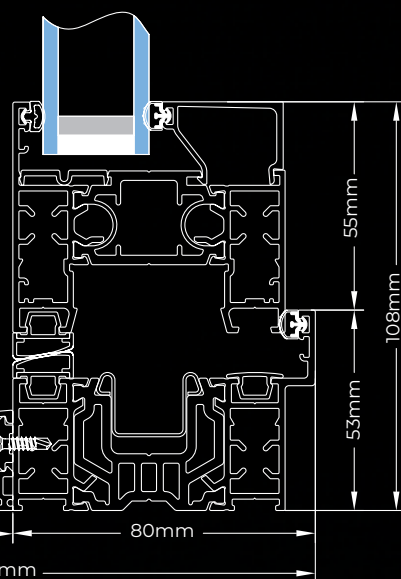
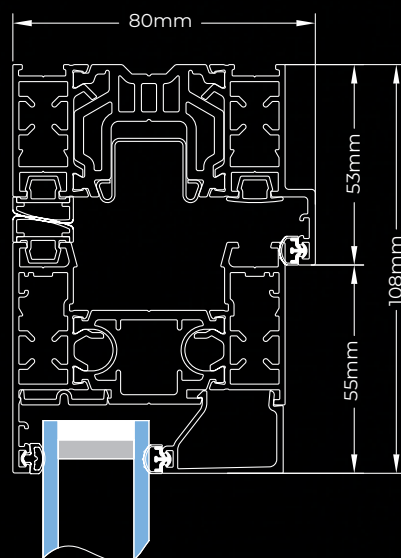


**Ingenious  
Locks &  
Hardware**

Bespoke Ingenious locking with one piece keeps and integral finger-pull passive door lock



**SUPPORTED BY IN-HOUSE  
SHEERLINE TECHNICAL  
TEAM**



## SUPER SLIM SIGHTLINES

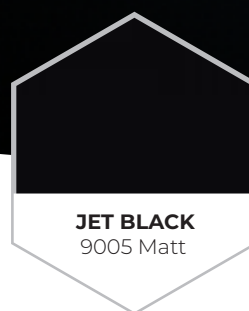
- Min Size 700mm(w) x 2000mm(h)
- Max Size 6000mm(w) x 2300mm(h)
- Max Sash Size 1000mm(w) x 2200mm(h)
- 72mm Outer frame

### SIGHTLINES:

OUTER FRAME / SASH	SASH / SASH
108mm	134mm

## COLOUR OPTIONS

INDEX IS AVAILABLE AS STANDARD IN OUR THREE MOST POPULAR COLOURS.



Other colours and foil lamination available to minimum order quantities. All covered by our comprehensive 25-year powder coated finish guarantee. Painted at our on-site Qualicoat 'seaside' quality facility.



APPROVED LICENCE

syntha pulvin.  
a brand of The Sherwin-Williams Company

APPLICATOR STATUS



## Part of the Sheerline family of integrated systems



	PRESTIGE	INDEX
COLOUR	Full colour range, duals and bespoke	Jet Black, Anthracite Grey, Hipca Gloss White
THRESHOLDS	Integral, low threshold, low threshold with ramp, outer frame and clip on cill	Outer frame and clip on cill
SASH STYLES	Stepped and Contemporary	Contemporary
MAX SASH SIZE	1200 x 2500mm	1000 x 2200mm
SIGHTLINE OUTERFRAME / SASH	110mm	108mm
SIGHTLINE SASH / SASH	138mm	134mm
ANCILLARIES	Fully compatible	Fully compatible
BEADS	Standardised Prestige beads	Standardised Prestige beads
U-VALUE	1.4U, No fuss, No foam	1.4U, No fuss, No foam
HARDWARE	VBH, Winkhaus	VBH, Ingenious
AVAILABILITY	Stillage and standard packs	Stillage only



## FULLY INTEGRATED

### SERVICE AND SUPPORT AT THE HEART OF EVERYTHING WE DO

From innovative next-generation product design to full OTIF delivery reporting, Sheerline are committed to delivering exceptional customer service.



9th fastest growth in the UK

# CONTACT US FOR MORE INFORMATION

01332 978000 | [www.sheerline.com](http://www.sheerline.com)

**ALFED**  
ALUMINIUM FEDERATION



Insulated with  
**THERMLOCK**  
technology